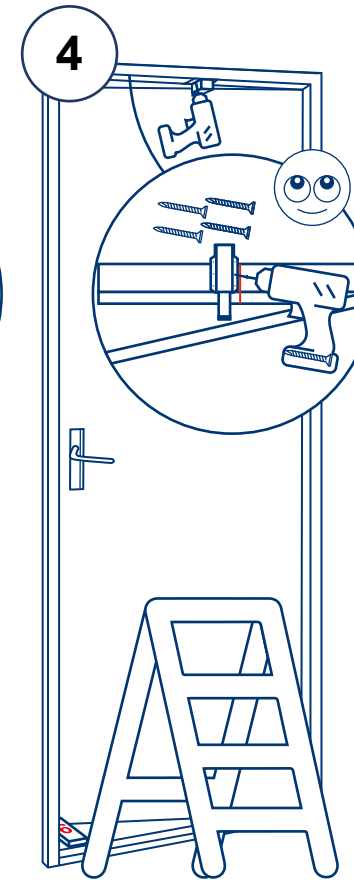
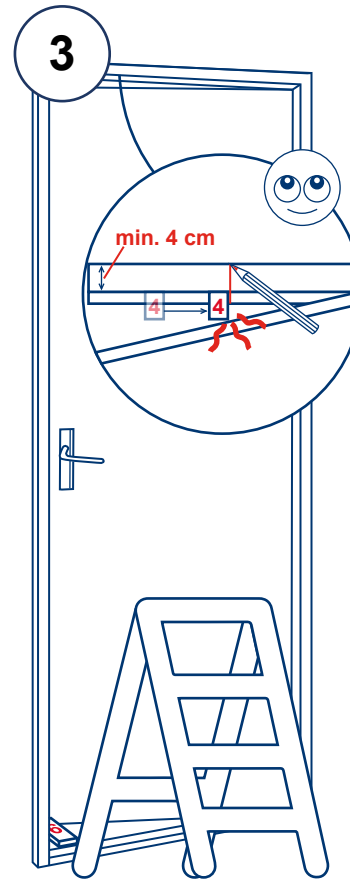
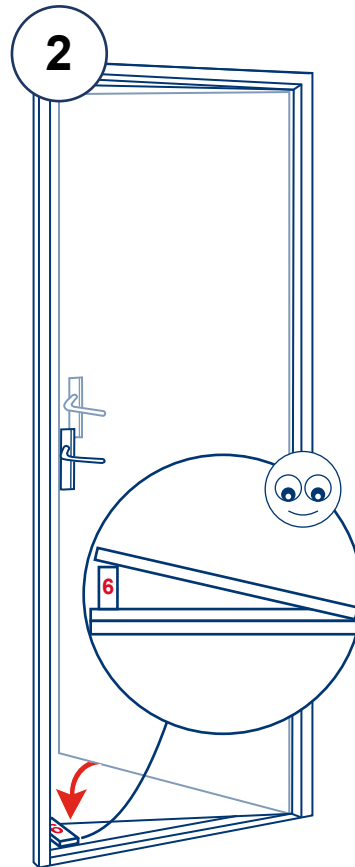
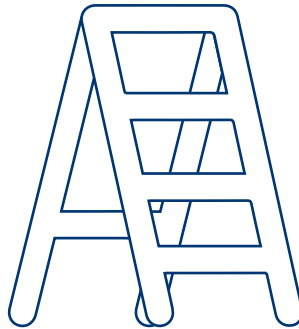
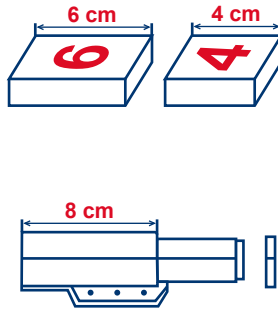
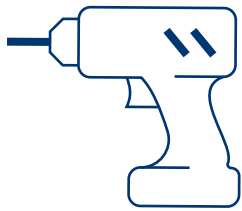


4 screws 39 x 16 mm
aluminium door frames



4 screws 40 x 19 mm
wooden door frames



Use the right screws
for your door post



Door post should have a
minimum thickness of 4 cm
There has to be at least 8 cm of
free space from a closed door at
the top side of the door frame



Put device on the top
of the door frame only

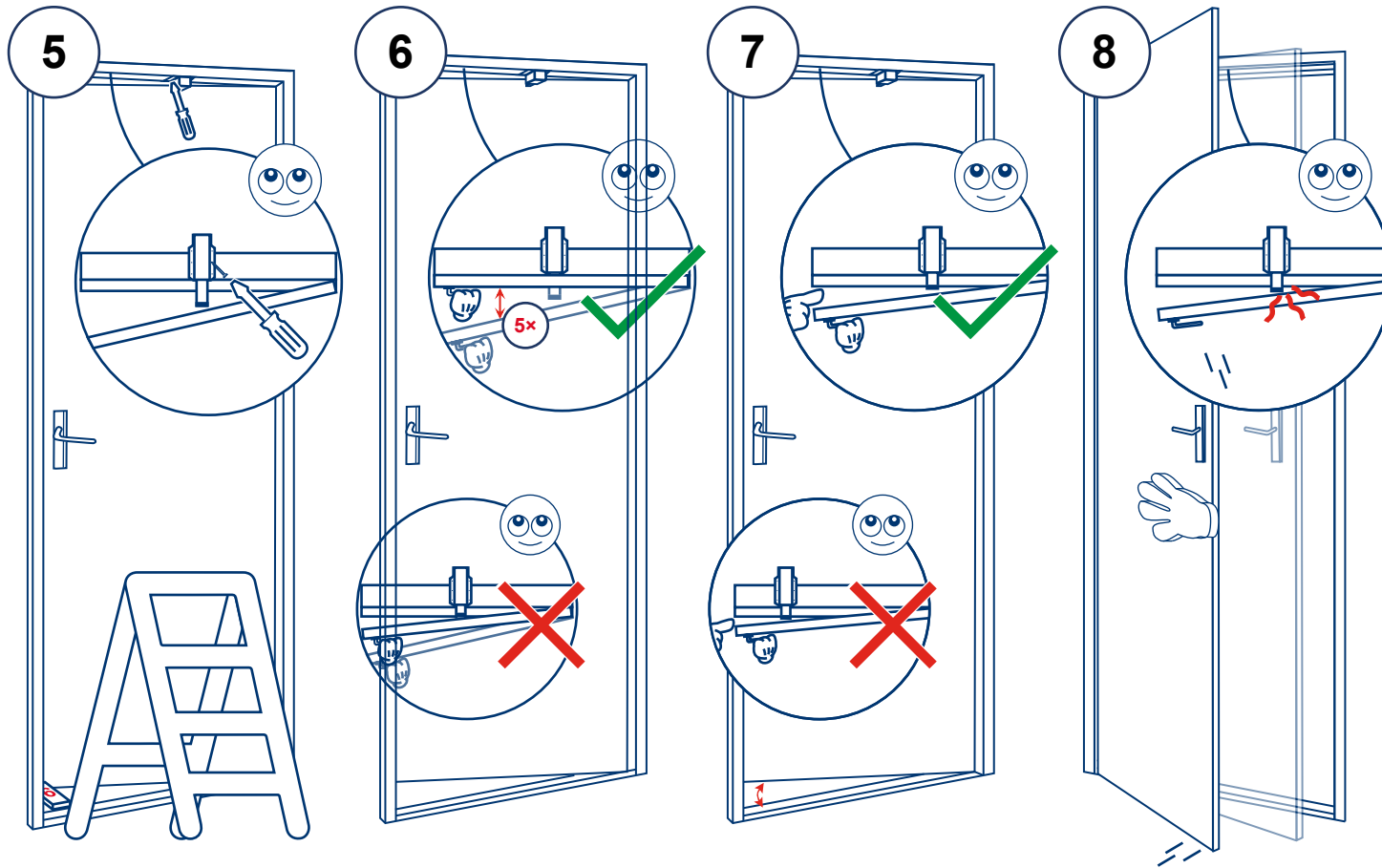


DISCLAIMER

Arte Viva BV assumes no responsibility for any consequential, direct or indirect loss or damage suffered by any person or property, which is the result of a failure to install and/or use of the Finger Alert Anti-Slam as set forth in the above instructions, or based upon misuse, neglect or modification of the Finger Alert Anti-Slam

FINGER ANTI-SLAM ALERT

Instructions



Spray WD40 on the pin and into the stopper, repeat once every 3 months



Step 7, 8 and 9 are to test the installation



Ensure that the product does not interfere with shutting the door

KIDSAFE
SAFE

